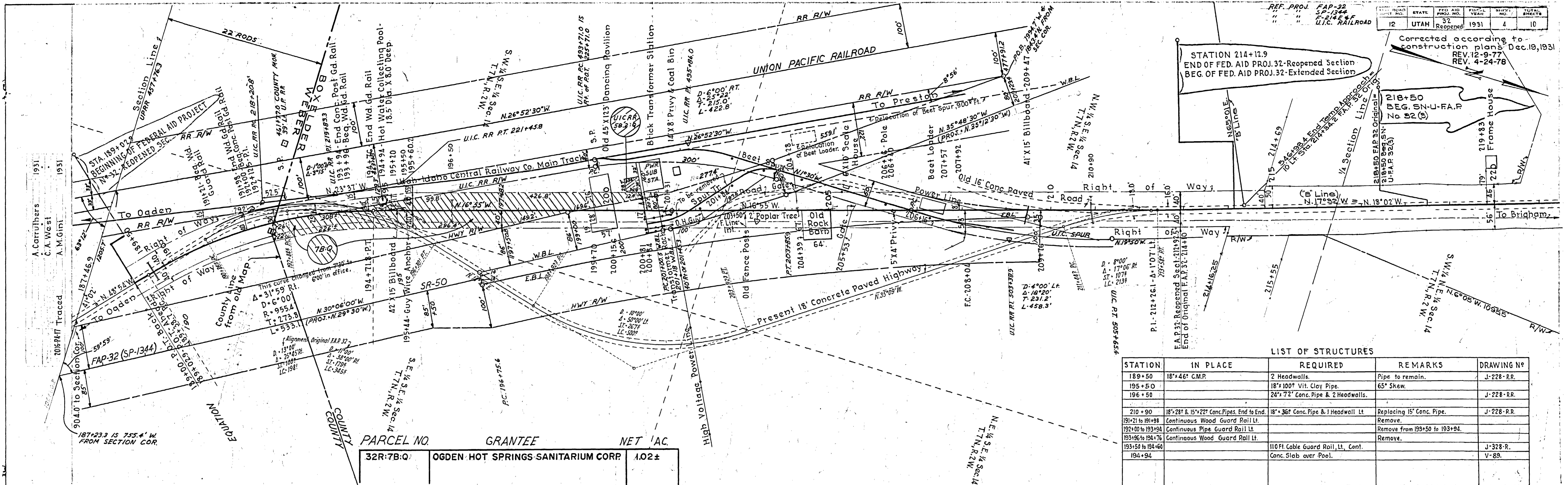


1931  
A. Carruthers  
C.A. West  
A.M. Gini

1931  
A. Carruthers  
A.M. Gini

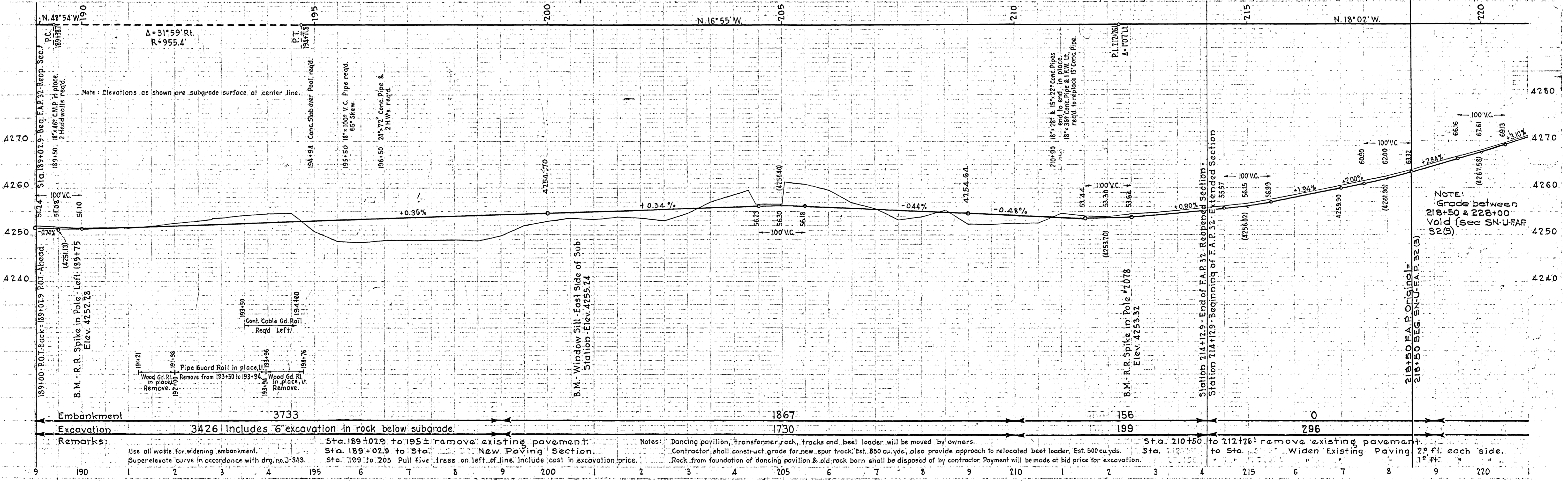
STATE	FED. AID PROJ. NO.	FISCAL YEAR	SHEET NO.	TOTAL SHEETS
UTAH	32	1931	4	10

Corrected according to construction plans Dec. 19, 1931  
REV. 12-9-77  
REV. 4-24-78



STATION	IN PLACE	REQUIRED	REMARKS	DRAWING N <sup>o</sup>
189+50	18'x46' C.M.P.	2 Headwalls.	Pipe to remain.	J-228-R.R.
195+50		18'x100' Vit. Clay Pipe.	65' Skew.	
196+50		24'x72' Conc. Pipe & 2 Headwalls.		J-228-R.R.
210+90	18'x28' & 15'x22' Conc. Pipes, End to End.	18'x36' Conc. Pipe & 1 Headwall Lt.	Replacing 15' Conc. Pipe.	J-228-R.R.
191+21 to 191+98	Continuous Wood Guard Rail Lt.		Remove.	
192+00 to 193+94	Continuous Pipe Guard Rail Lt.		Remove from 193+50 to 193+94.	
193+96 to 194+76	Continuous Wood Guard Rail Lt.		Remove.	J-328-R.
193+57 to 194+60		110ft. Cable Guard Rail Lt., Cent.		V-89.
194+94		Conc. Slab over Pool.		

PARCEL NO.	GRANTEE	NET AC.
32R:7B:Q	OGDEN HOT SPRINGS SANITARIUM CORP	1.02±



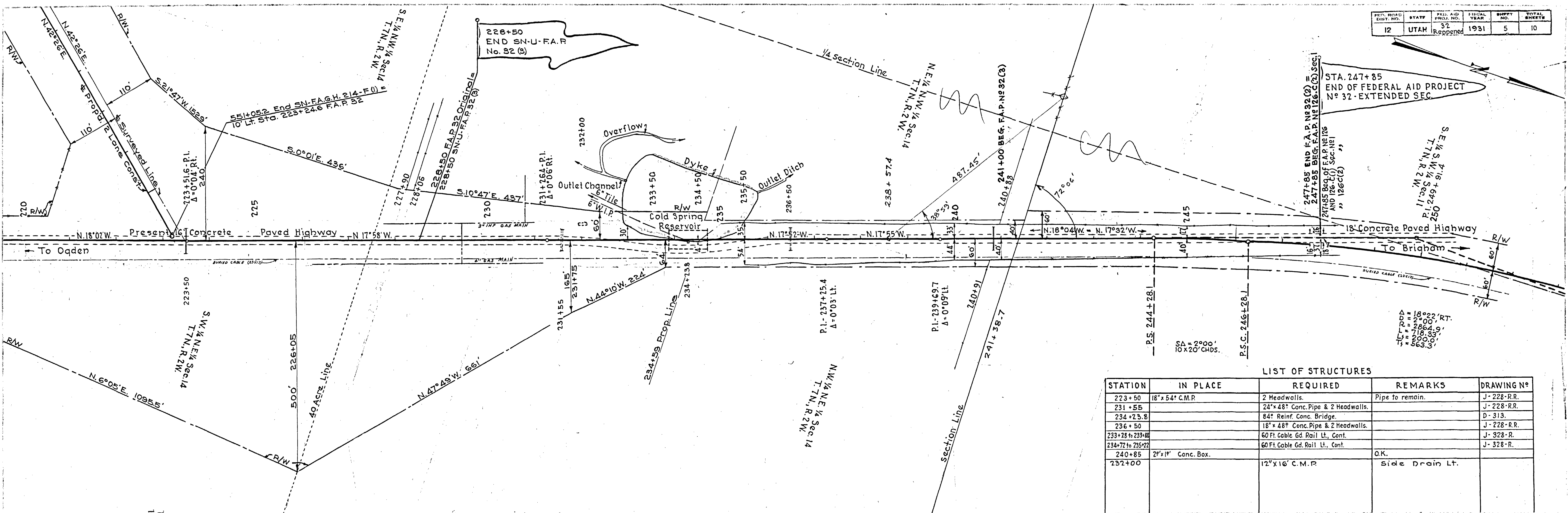
Embankment 3733  
Excavation 3426 Includes 6' excavation in rock below subgrade.  
Remarks: Sta. 189+02.9 to 195± remove existing pavement. New Paving Section. Sta. 199 to 205 Pull five trees on left of line. Include cost in excavation price.

Notes: Dancing pavilion, transformer rack, tracks and beet loader will be moved by owners. Contractor shall construct grade for new spur track. Est. 850 cu. yds. also provide approach to relocated beet loader. Est. 600 cu. yds. Rock from foundation of dancing pavilion & old rock barn shall be disposed of by contractor. Payment will be made at bid price for excavation.

NOTE: Grade between 218+50 & 228+00 Void (see SN-U-FAP 32(B))

FED. ROAD DIST. NO.	STATE	FED. AID PROJ. NO.	FISCAL YEAR	SHEET NO.	TOTAL SHEETS
12	UTAH	Reopened	1931	5	10

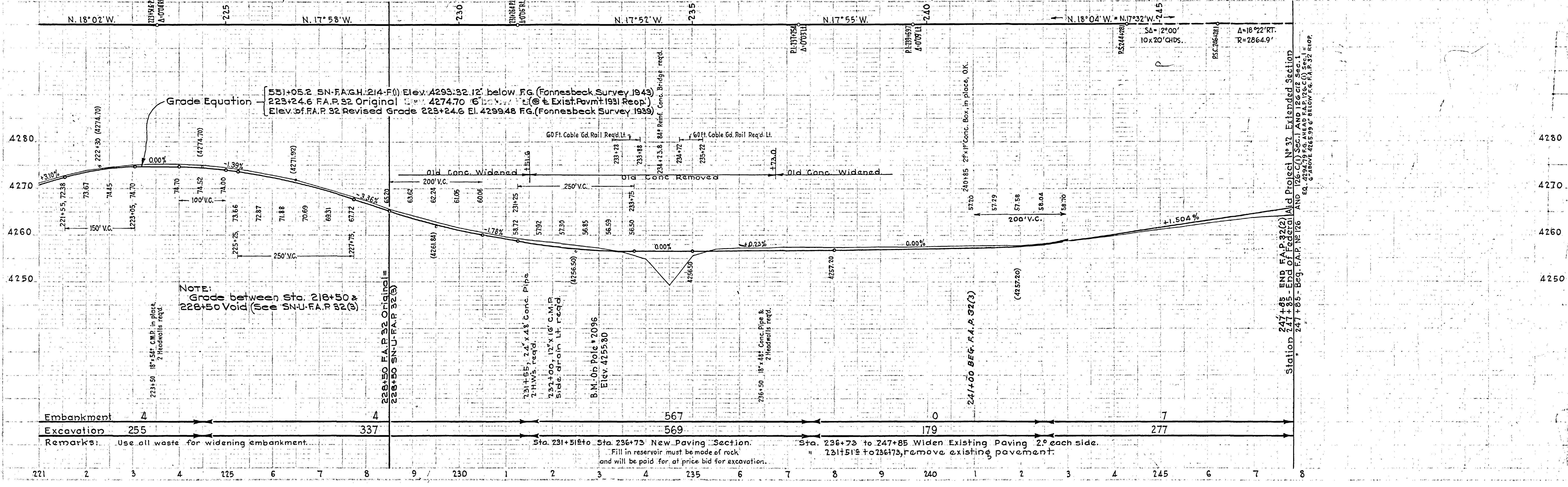
1931  
 A. Carruthers & A.M.Gini  
 C.A. West  
 Cal. A.M.Gini  
 2016PAT



**LIST OF STRUCTURES**

STATION	IN PLACE	REQUIRED	REMARKS	DRAWING NO.
223+50	18" x 54" C.M.P.	2 Headwalls.	Pipe to remain.	J-228-R.R.
231+55		24" x 48" Conc. Pipe & 2 Headwalls.		J-228-R.R.
234+23.8		84" Reinf. Conc. Bridge.		D-313.
236+50		18" x 48" Conc. Pipe & 2 Headwalls.		J-228-R.R.
233+28 to 235+28		60 Ft. Cable Gd. Rail Lt., Cont.		J-328-R.
234+72 to 235+22		60 Ft. Cable Gd. Rail Lt., Cont.		J-328-R.
240+85	24" x 18" Conc. Box.		O.K.	
232+00		12" x 16" C.M.P.	Side Drain Lt.	

1931  
 A. Carruthers & A.M.Gini  
 A.M.Gini  
 2016



Embankment 4  
 Excavation 255  
 Remarks: Use all waste for widening embankment.

228+50 F.A.P. 32 Original = 226+50 SN-U.F.A.P. 52(3)  
 Sta. 231+51 to Sta. 236+73 New Paving Section.  
 Fill in reservoir must be made of rock and will be paid for at price bid for excavation.

Sta. 236+73 to 247+85 Widen Existing Paving 2' each side.  
 231+51 to 236+73, remove existing pavement.